

Capstone: Your trusted BIM Partner for MEP Engineering Excellence

Mirroring a global trend, BIM is revolutionizing MEP engineering in the US. 3D models created with BIM software foster seamless collaboration across disciplines, reducing errors and rework by up to 15%. These models also empower engineers to design with sustainability in mind, optimizing buildings for energy efficiency. Further, BIM provides real-time project insights, leading to improved decision-making and project delivery. As the global BIM market surges, it's clear: BIM isn't a fad, it's the future of intelligent building design in the US. Capstone Engineering stands at the forefront of this movement, leveraging BIM expertise to deliver high-performance and cost-effective MEP solutions for your projects.

Our MEP BIM Expertise:

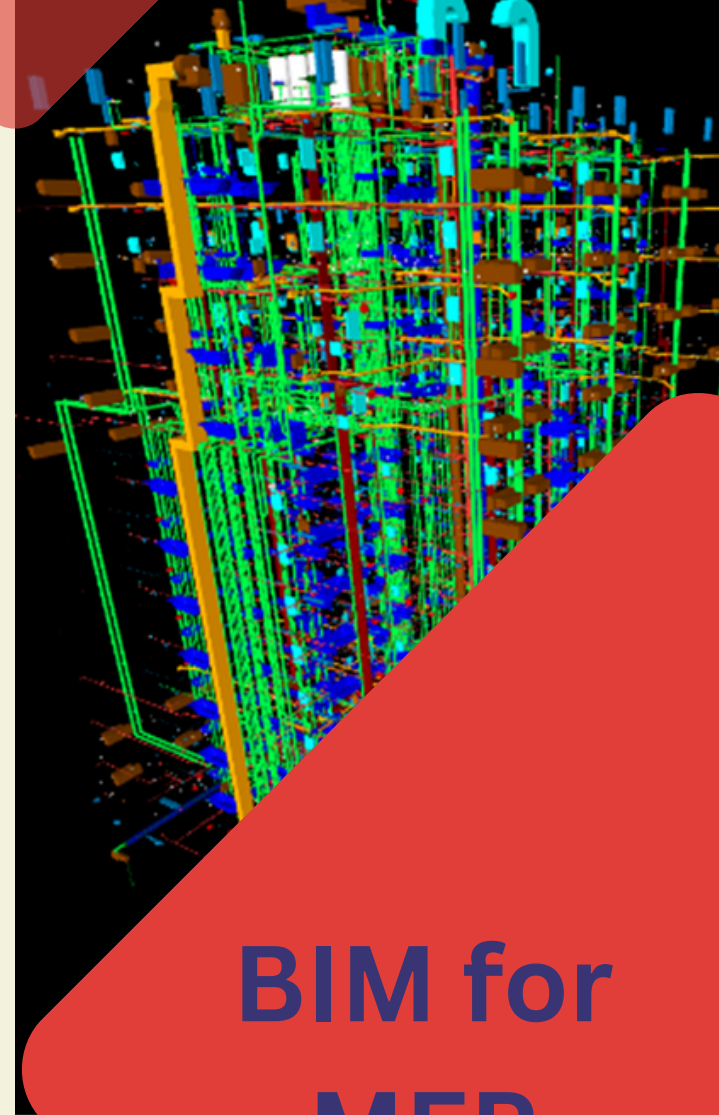
- 3D BIM Modeling for MEP
- Clash Detection and Resolution
- MEP Design Development & Coordination
- MEP Design Validation

About Capstone Engineering Solution:

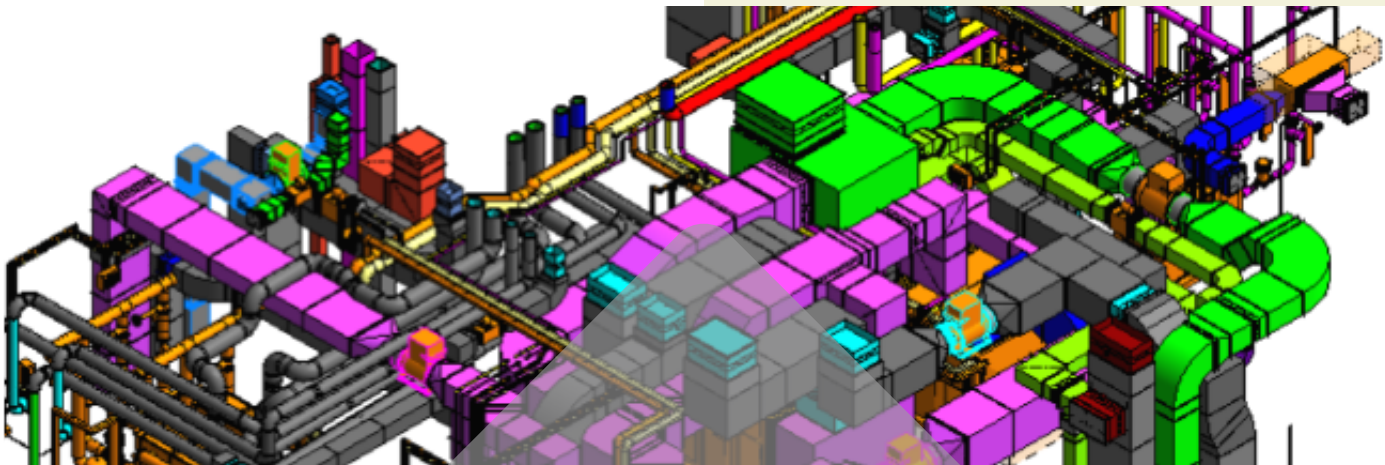
Welcome to Capstone, where innovation meets expertise in architecture, structure, MEP, and industrial services. With a proud legacy spanning over 17 years, we have emerged as a trusted partner for industry giants like Specon, Petrofac, TechnipFMC, AECOM, and Dodsai. Our journey is marked by a relentless pursuit of excellence, delivering top-notch solutions in architecture, building, house exteriors, renovations, and industrial projects.

Our Services:

- 3D BIM Modeling, Coordination & Clash Resolution (LOD 300, LOD 400)
- Shop Drawings, Riser Drawings, Sleeve Penetration/Cut-Out Drawings
- Block-out Drawings, Pre-Fabrication/Spool Drawings
- CNC Data Integration with BIM Models
- Quantity Take-offs (Pre-bid & Execution)
- Value Engineering & MEP Design Validation
- As-Built Modeling & As-Built Documentation
- Scan-to-BIM/Point Cloud to Revit Modeling
- MEP Walkthrough



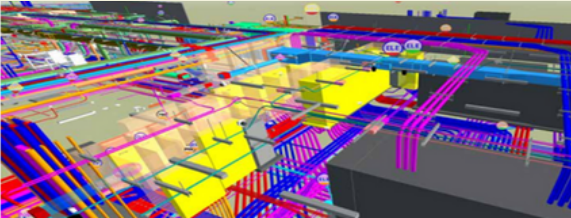
BIM for MEP



Sectors we facilitate:

- Residential Buildings
- Commercial Buildings
- Railway Stations and Airports
- Hospitals, hotels, and Resorts
- Schools and Universities
- Industrial Gas Stations
- Historical Monuments

Electrical BIM Modeling



Input – Concept Revit Model



Input - Schedule Drawings

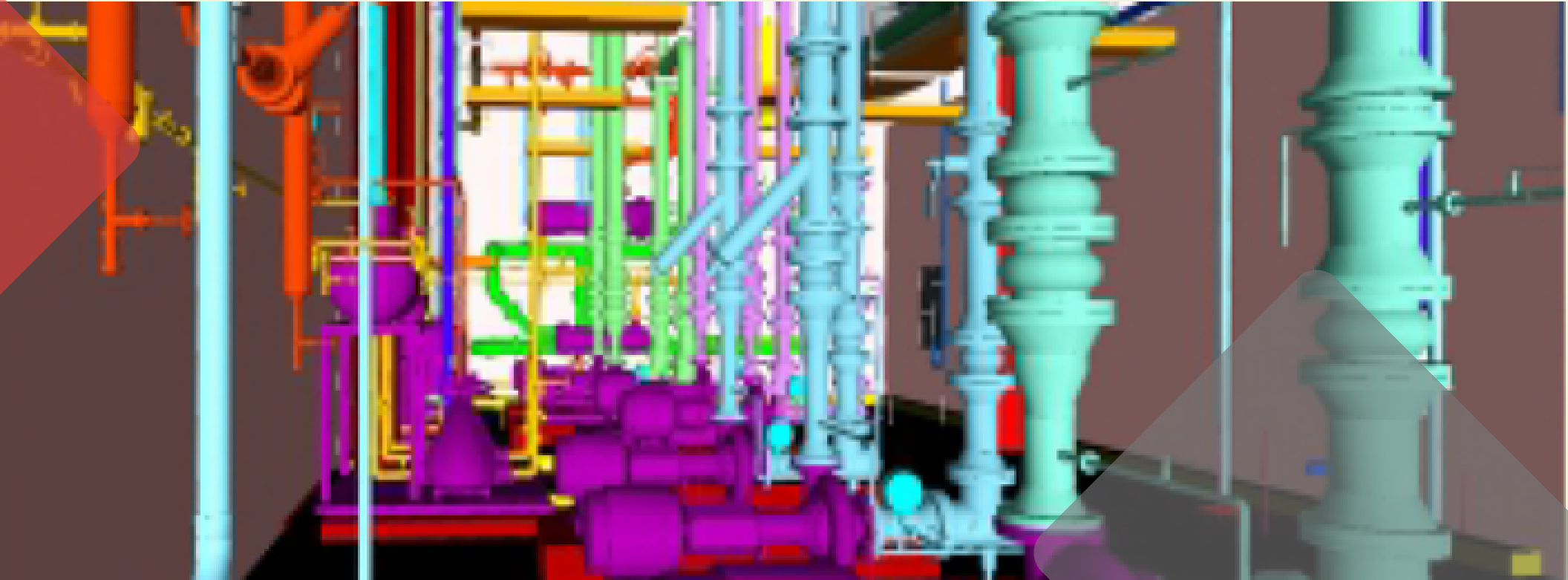


Work Process:

MEP BIM transforms projects through collaborative 3D modeling, clash detection, and data-driven design to optimize MEP systems from conception to facility management.

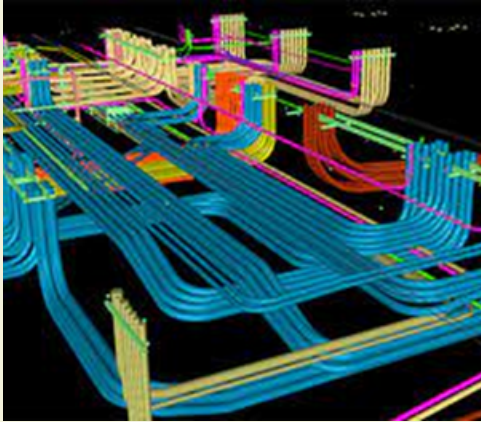
Software Used:

Leveraging industry-leading BIM software like Revit MEP, AutoCAD MEP, Navisworks, Recap Pro, Fabrication CAD MEP, and Fabrication CAMDUCT, Capstone Engineering delivers cutting-edge MEP BIM solutions.



MEP Project Samples

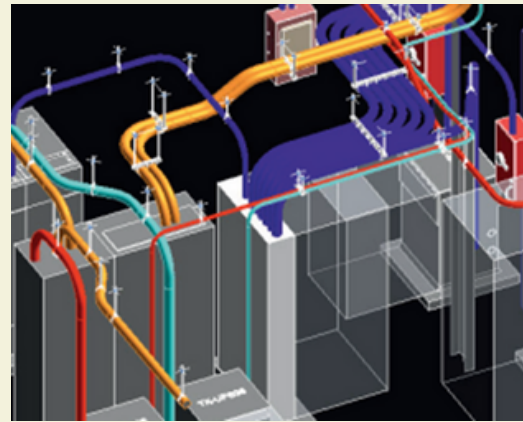
Coordination of Conduits



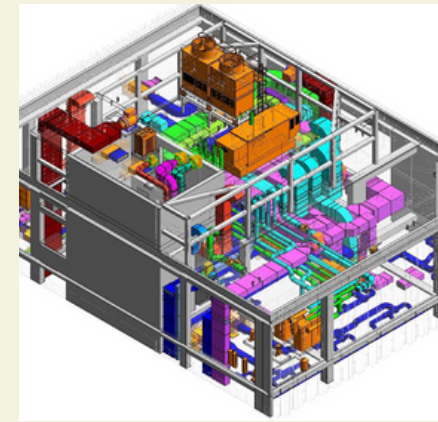
Coordination of Security Devices



Feeder Conduit



Coordinated 3D BIM Model



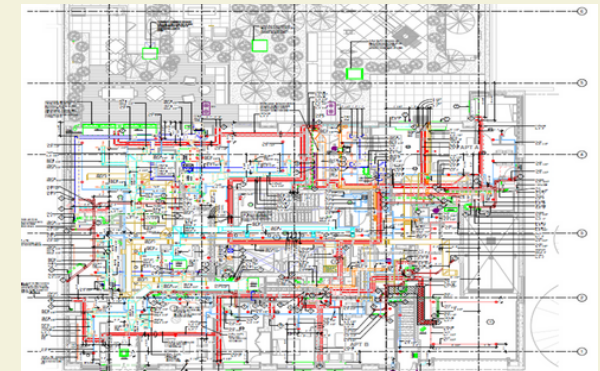
Electrical Design Validation

FEATURE TYPE	FEATURE DESCRIPTION	MANUFACTURER	SAT. NO.	LEADLINE PATH
ME	TRUCK GARAGE PP-1			
ME	MECHANICAL ROOM			
ME	LPT FLUOROPOLYMER TUBES/CONDUIT	GENERAL	MECHANICAL ROOM	1
ME	LPT FLUOROPOLYMER TUBES/CONDUIT	GENERAL	MECHANICAL ROOM	2
ME	LPT FLUOROPOLYMER TUBES/CONDUIT	GENERAL	MECHANICAL ROOM	3
ME	LPT FLUOROPOLYMER TUBES/CONDUIT	GENERAL	MECHANICAL ROOM	4
ME	LPT FLUOROPOLYMER TUBES/CONDUIT	GENERAL	MECHANICAL ROOM	5
ME	LPT FLUOROPOLYMER TUBES/CONDUIT	GENERAL	MECHANICAL ROOM	6
ME	LPT FLUOROPOLYMER TUBES/CONDUIT	GENERAL	MECHANICAL ROOM	7
ME	LPT FLUOROPOLYMER TUBES/CONDUIT	GENERAL	MECHANICAL ROOM	8
ME	LPT FLUOROPOLYMER TUBES/CONDUIT	GENERAL	MECHANICAL ROOM	9
ME	LPT FLUOROPOLYMER TUBES/CONDUIT	GENERAL	MECHANICAL ROOM	10
ME	LPT FLUOROPOLYMER TUBES/CONDUIT	GENERAL	MECHANICAL ROOM	11
ME	LPT FLUOROPOLYMER TUBES/CONDUIT	GENERAL	MECHANICAL ROOM	12
ME	LPT FLUOROPOLYMER TUBES/CONDUIT	GENERAL	MECHANICAL ROOM	13
ME	LPT FLUOROPOLYMER TUBES/CONDUIT	GENERAL	MECHANICAL ROOM	14
ME	LPT FLUOROPOLYMER TUBES/CONDUIT	GENERAL	MECHANICAL ROOM	15
ME	LPT FLUOROPOLYMER TUBES/CONDUIT	GENERAL	MECHANICAL ROOM	16
ME	LPT FLUOROPOLYMER TUBES/CONDUIT	GENERAL	MECHANICAL ROOM	17
ME	LPT FLUOROPOLYMER TUBES/CONDUIT	GENERAL	MECHANICAL ROOM	18
ME	LPT FLUOROPOLYMER TUBES/CONDUIT	GENERAL	MECHANICAL ROOM	19
ME	LPT FLUOROPOLYMER TUBES/CONDUIT	GENERAL	MECHANICAL ROOM	20
ME	LPT FLUOROPOLYMER TUBES/CONDUIT	GENERAL	MECHANICAL ROOM	21
ME	LPT FLUOROPOLYMER TUBES/CONDUIT	GENERAL	MECHANICAL ROOM	22
ME	LPT FLUOROPOLYMER TUBES/CONDUIT	GENERAL	MECHANICAL ROOM	23
ME	LPT FLUOROPOLYMER TUBES/CONDUIT	GENERAL	MECHANICAL ROOM	24
ME	LPT FLUOROPOLYMER TUBES/CONDUIT	GENERAL	MECHANICAL ROOM	25
ME	LPT FLUOROPOLYMER TUBES/CONDUIT	GENERAL	MECHANICAL ROOM	26
ME	LPT FLUOROPOLYMER TUBES/CONDUIT	GENERAL	MECHANICAL ROOM	27
ME	LPT FLUOROPOLYMER TUBES/CONDUIT	GENERAL	MECHANICAL ROOM	28
ME	LPT FLUOROPOLYMER TUBES/CONDUIT	GENERAL	MECHANICAL ROOM	29
ME	LPT FLUOROPOLYMER TUBES/CONDUIT	GENERAL	MECHANICAL ROOM	30
ME	LPT FLUOROPOLYMER TUBES/CONDUIT	GENERAL	MECHANICAL ROOM	31
ME	LPT FLUOROPOLYMER TUBES/CONDUIT	GENERAL	MECHANICAL ROOM	32
ME	LPT FLUOROPOLYMER TUBES/CONDUIT	GENERAL	MECHANICAL ROOM	33
ME	LPT FLUOROPOLYMER TUBES/CONDUIT	GENERAL	MECHANICAL ROOM	34
ME	LPT FLUOROPOLYMER TUBES/CONDUIT	GENERAL	MECHANICAL ROOM	35
ME	LPT FLUOROPOLYMER TUBES/CONDUIT	GENERAL	MECHANICAL ROOM	36
ME	LPT FLUOROPOLYMER TUBES/CONDUIT	GENERAL	MECHANICAL ROOM	37
ME	LPT FLUOROPOLYMER TUBES/CONDUIT	GENERAL	MECHANICAL ROOM	38
ME	LPT FLUOROPOLYMER TUBES/CONDUIT	GENERAL	MECHANICAL ROOM	39
ME	LPT FLUOROPOLYMER TUBES/CONDUIT	GENERAL	MECHANICAL ROOM	40
ME	LPT FLUOROPOLYMER TUBES/CONDUIT	GENERAL	MECHANICAL ROOM	41
ME	LPT FLUOROPOLYMER TUBES/CONDUIT	GENERAL	MECHANICAL ROOM	42
ME	LPT FLUOROPOLYMER TUBES/CONDUIT	GENERAL	MECHANICAL ROOM	43
ME	LPT FLUOROPOLYMER TUBES/CONDUIT	GENERAL	MECHANICAL ROOM	44
ME	LPT FLUOROPOLYMER TUBES/CONDUIT	GENERAL	MECHANICAL ROOM	45
ME	LPT FLUOROPOLYMER TUBES/CONDUIT	GENERAL	MECHANICAL ROOM	46
ME	LPT FLUOROPOLYMER TUBES/CONDUIT	GENERAL	MECHANICAL ROOM	47
ME	LPT FLUOROPOLYMER TUBES/CONDUIT	GENERAL	MECHANICAL ROOM	48
ME	LPT FLUOROPOLYMER TUBES/CONDUIT	GENERAL	MECHANICAL ROOM	49
ME	LPT FLUOROPOLYMER TUBES/CONDUIT	GENERAL	MECHANICAL ROOM	50

Lighting fixture voltage is given 277 that differ from distribution voltage

We engineer intelligent MEP systems with BIM, optimizing performance, sustainability, and seamless building integration.

Combined Service Drawings



Contact Us

Contact us today for a free consultation to discuss your specific needs and see how MEP BIM solutions can optimize your AEC project.

USA: Samrat Dutta, General Manager

302-206-3183

samrat.dutta@capstonees.com

www.capstonees.com

16192, Coastal Highway, Lewes, Delaware, 19958 USA

